

CAITLIN LONEGAN

B. 1982, Long Island, N.Y.

Lives and works in Los Angeles, CA.

Contact information: info@cloneganstudio.com / (516)353-2199

Education:

M.F.A. University of California, Los Angeles, 2010.

B.A. Yale University, (Double Major: Art and Applied Physics), 2005.

Yale/Norfolk Summer School of Art, Norfolk, CT, 2004.

Paul Mellon Center for British Art, London, England, 2002.

Solo Exhibitions:

The Mark on the Wall, ACME., Los Angeles CA, 2012.

Recent Paintings, ACME., Los Angeles, CA, 2010.

Group Exhibitions:

"Forms of Abstraction," Irvine Fine Arts Center, Irvine, CA, 2013.

"Sundays at 4," Todd Madigan Gallery, CSU Bakersfield, Bakersfield, CA, 2012.

"Abstract Paintings and DVDs", curated by Monique van Genderen, Venice Beach Biennial, Los Angeles, CA, 2012.

"Fun With Friends / Kristin Calabrese with Brenna Youngblood and Caitlin Lonegan", Green Gallery East, Milwaukee, WI, 2012.

"Someone Puts A Pineapple Together:" Gregory Edwards, Caitlin Lonegan, William J. O'Brien, & Mariah Robertson, ACME., Los Angeles, CA, 2012.

Joan Mitchell MFA Award Recipient Show, Cue Foundation, New York, NY, 2011.

Unfinished: Paintings by 38 Contemporary Artists, L.A.C.E., Los Angeles, CA, 2011.

Works of Paper, ACME., Los Angeles, CA, 2011.

Justin Beal, Tony Feher & Caitlin Lonegan, ACME., Los Angeles, CA, 2011.

Mari Eastman, Caitlin Lonegan, Anna Sew-Hoy, Idyllwild Arts Center, Idyllwild, CA, 2010.

MFA Thesis Show #4: Caitlin Lonegan, Peter Lynde, David Snyder, Greta Svalberg, and Wu-Ingrid Tsang. New Wight Gallery, University of California Los Angeles, Los Angeles, CA, 2010.

Wet Paint: 10 Young LA Painters, Steve Turner Contemporary, Los Angeles, CA, 2009.

Lovable Like Orphaned Kitties and Bastard Children, Green Gallery East, Milwaukee, WI, 2009.

Small Paintings, Hole in the Wall Gallery, Otis College of Art and Design, 2009.

MFA 2010, New Wight Gallery, University of California, Los Angeles, CA, 2009.

10th Anniversary Show, Black Dragon Society, Los Angeles, CA, 2008.

Casual Visuals (Curator), Yale School of Art, 2005.

Senior Thesis Show, Yale School of Art, 2005.

Press/Publications/Writing:

“Notes from the Studio, 2013.” Caitlin Lonegan, Artists Practice Publication, edited by Clay Dean, vol 1, 2014.

Mary Weatherford, “Another Abstraction by Caitlin Lonegan,” Little Star Weekly (mobile application), no 45., December 27, 2013. (Image, Cover).

New American Painters, no 109, West Coast Edition, Juror: Janet Bishop, Editor’s Pick., 2013.

Geoff Tuck, “Gregory Edwards, William J Obrien, Mariah Robertson,” Notes on Looking.com, 2012.

Dawn Chan, *“On ‘Someone Puts A Pineapple Together,’ 2012.*

Charles Shultz, *The Work of Caitlin Lonegan*, Micah Daw, Kristin Haas, Brian Porray, and Janet Bruhn, Joan Mitchell Foundation, New York, NY, 2011.

Eve Wood, Caitlin Lonegan, Artillery, Los Angeles, CA, 2010.

Talks/Panels/Lectures:

UCLA, Advanced Drawing, 2013.

Pomona College, Intro Painting, 2013

Claremont Graduate School, Visiting Artist Public Lecture, 2012

On Process and Materiality, Panel Discussion with Mari Eastman and Anna Sew Hoy, Idyllwild Arts Academy, 2010.

Artist Talk, Senior Studio, UCLA, 2009.

Albers and Color Perception, Notes on Color, UCLA, 2008.

Color Juxtapositions: the Role of Hue in Depth Illusions, Department of Physics and Applied Physics, Yale University, 2005.

Academic Drawing, Gottshalk Gallery, Cold Spring Harbor, NY, 2005.

Existing Research in Color Perception, Department of Physics and Applied Physics, Yale University, 2005.

Grants/ Awards:

Artist-in-Residence, University of Nevada, Las Vegas, 2012.

Joan Mitchell MFA Award Recipient, Joan Mitchell Foundation, New York, NY, 2010.

Hoyt Scholarship, University of California Los Angeles, Los Angeles, CA, 2010.

Dedalus Award Nominee, University of California Los Angeles, Los Angeles, CA, 2009.

School of the Arts and Architecture Dean's Scholarship, UCLA, 2009.

Drawing Prize, Kay Nielson Memorial Award for Best Drawing, Gruenwald Center, Hammer Museum (Judged by Allegra Pesenti and Russell Ferguson), Los Angeles, CA, 2008.

Art Council Award, University of California Los Angeles, 2008.

Mellon Award for Research entitled, "Color Juxtapositions: the Role of Hue in Depth Illusions," Yale University, 2005.

Distinction in Art Major, Yale University, 2005

Sudler Award for Projects in the Arts, 2004, 2005

Ellen Battell Stoeckel Fellowship 2004

Karl van Horn Scholarship for work in Applied Physics, Yale University 2004

William Joseph Sette Scholarship for work in Applied Physics, Yale University 2004

Teaching Experience:

Visiting Lecturer and Artist in Residence, Graduate and Undergraduate Seminars, University of Nevada, Las Vegas, Spring 2012.

Adjunct Lecturer, Introductory Drawing, Whittier College, Fall 2010.

Instructor, Painting, Summer Art Institute for High School Students, University of California, Los Angeles., Summer 2010.

Teaching Assistant and Discussion Section Instructor, University of California, Los Angeles, 2010.

Advanced Painting (Lead Instructor: Roger Herman), Winter 2010.

Senior Studio (Lead Instructor: Steve Roden), Fall 2009.

Advanced Painting (Lead Instructor: Lari Pittman), Spring 2009.

Advanced Painting (Lead Instructor: Lari Pittman), Winter 2009.

Modernism (Lead Instructor: Jan Tumlir), Fall 2008.

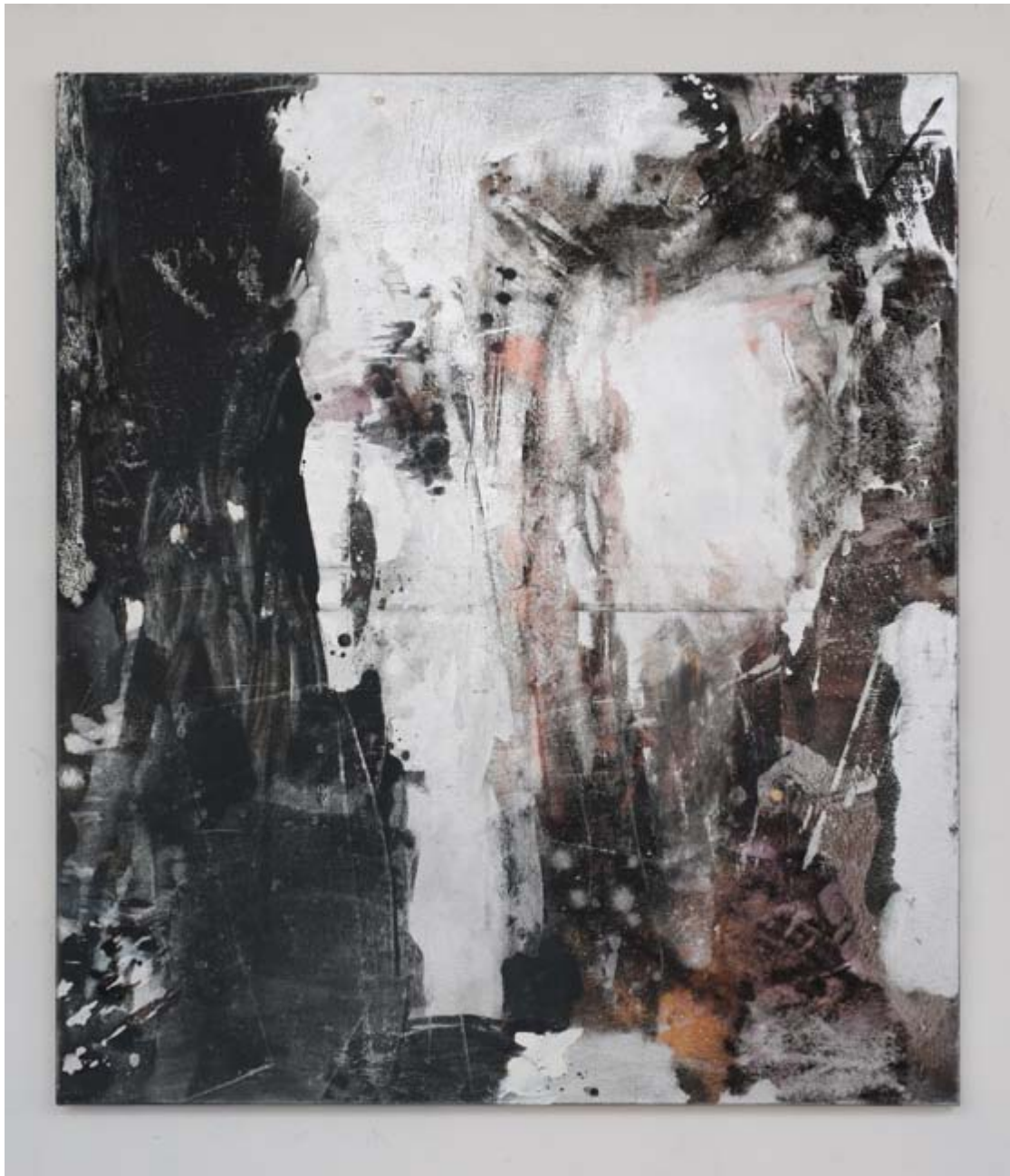
"Notes on Color," (Lead Instructor: James Welling), Spring 2008.



Untitled 2013
Oil, metallic oil, iridescent oil on canvas
78x72x1.5 in



Untitled 2013
oil, metallic oil, iridescent oil on canvas
48x48x1.5



Untitled 2013
Oil, metallic oil, iridescent oil on canvas.
48x42x1.5 in



Untitled 2013
Oil, metallic oil and iridescent oil on polyester.
22x18x0.75 in



Untitled 2013
Oil, metallic oil and iridescent oil on polyester
20x16x0.75 in



Untitled, 2013
oil, iridescent oil and metallic oil on polyester
30x24x0.75 in









